



## EXPECT A BETTER BUILDING

### Indoor Comfort

Fox Blocks ICF wall systems improve the interior environment by eliminating moisture intrusion, managing the air flow, allowing for accurate climate control, and providing sound mitigation.

### Sustainability and Energy Efficiency

Fox Blocks ICFs address all three of the thermal transfer properties that define the energy efficiency of a building.

**Conduction** — High R-Value of R-23.5

**Convection** — Air tight wall with an ACH of .04–.09

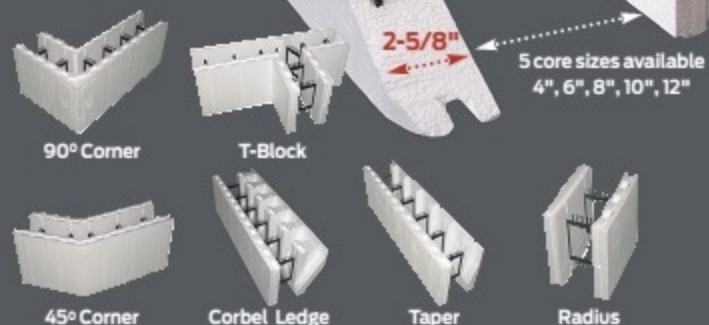
**Radiation** — High thermal mass of the concrete

These performance characteristics of our wall system can reduce a building's heating and cooling cost dramatically and puts Net Zero Energy goals within reach.

## FOX BLOCKS INSULATING CONCRETE FORM FEATURES



### Other Form Configurations



### Reversible

Universal forms with no top or bottom, no right or wrong side and no left or right corner make stacking easy.



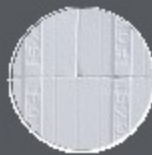
### Engineered Ties

Fox Blocks ties has stout strength along with an open truss design that allows for proper concrete consolidation.



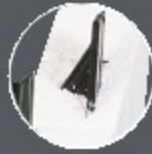
### Ties Stack on Top of Each Other

Eliminates the settling of forms during concrete placement. Also, creates a continuous vertical fastening strip- No Gaps!



### True 1.5 Density EPS Foam

The form always feels solid and you'll have less damage to forms during handling.



### Furring Strip is a Full 1 1/2" Wide and 16" Tall

Allowing for easy attachment of drywall and exterior finishes. Tested fastener pullout strength equal to or greater than wood.



## FOX BLOCKS ESTIMATOR PRO 4

Fox Blocks Estimator PRO4 is now LIVE and available to download and use for project take offs and estimates! Estimate ICF quantities including:

- Specialty blocks
- Opening material
- Ancillary products
- Lineal feet of rebar
- Volume of concrete
- Man hours for a specific job

Our ICF estimator was created by industry professionals with decades of intensive technical experience in the ICF construction industry.

Available for PC and MAC

Download online, iTunes Store or Google Play App



## 5-IN-1 WALL CONSTRUCTION

By completing these five different steps all in one ICF wall,



# Why Fox Blocks?

After decades of experience and innovation in the ICF industry, Fox Blocks backs up our products with the support and service that designers, builders, and homeowners expect.

## Dedicated Customer Support

Fox Blocks is committed to hands-on premium client services with a support team consisting of Client Reps, Order Specialists, and Freight Coordinators that are here to ensure our ICF products get ordered and delivered seamlessly.

## Exclusive Technical Resources

Working with Fox Blocks doesn't mean a one time exchange and then using ICFs on your own. Instead, work with some of the most experienced ICF professionals in the industry to determine the best way to proceed with your specific project.

## Strong ICF Brand Recognition

Fox Blocks brand is supported by the best-in-class services and the highly-rated performance of our ICFs. As the latest generation of ICF technology, we are a proud leader in ICF products, manufacturing, and education.

## With Fox Blocks, you'll have access to:

- An engineer who can help you with prescriptive wall reinforcement, moisture management, and building code compliance.
- Specialists who can teach installation techniques on-site and answer questions throughout the construction process.
- Our number one asset — our employees. We are here to listen to your needs and deliver ICF wall solutions to improve your bottom line.

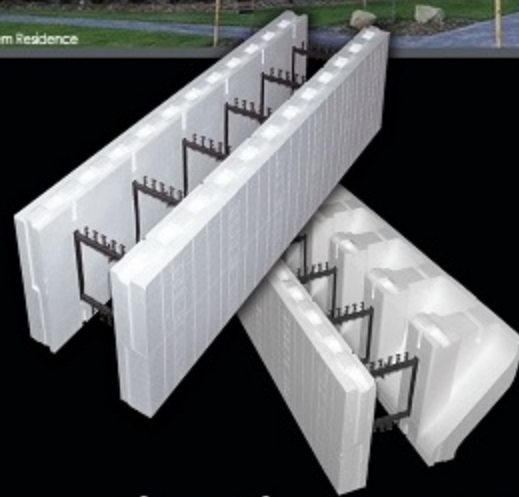


In 2006, after 20 years of producing all brands of ICFs, Airlite introduced the Fox Blocks ICF brand as the latest generation of insulated concrete form available from the manufacturer to the market. By being a top notch plastics company, Airlite is able to deliver one of the highest ratios of recycled plastic weight to foam content in the industry- all at competitive costs.

## Insulating Concrete Forms



Orem Residence



WWW.FOXBLOCKS.COM | 877.369.2562



Manufactured In the USA: AL, AK, AZ, CA, CO, FL, ID [2], IN, MA, MN, MO, NC, NE, PA [2], TX  
 Manufactured In Canada: AB, MB, NB, QC  
 Manufactured In The Cayman Islands

With 22 plants strategically placed across all of North America, we can produce the inventory needed and deliver products to meet the demands of the construction market.



Scrap from Airlite's 1.5 billion container parts are recycled each year and used in the Fox Blocks ties



Industrial Strength Insulating Concrete Forms (ICFs)

WWW.FOXBLOCKS.COM | 877.369.2562



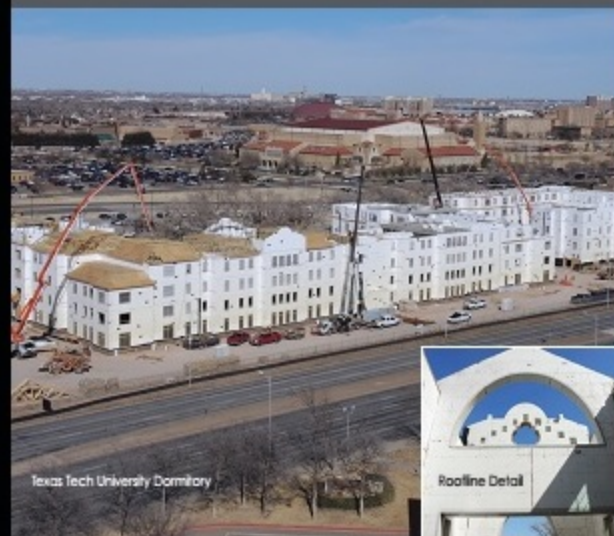
Copyright 2014 Fox Blocks



FAMILY OWNED SINCE 1946

6110 Abbott Drive | Omaha, NE 68110 | info@foxblocks.com

## SUSTAINABLE BUILDING ENVELOPES START WITH ICF



Texas Tech University Dormitory



Roofline Detail

## High Performance Building Envelope

- Air-tight ICF walls, sealed windows and doors, and a properly insulated roof all contribute to a superior "building envelope."
- Fox Blocks ICFs enhance a building's performance characteristics and Indoor Environmental Quality (IEQ) by improving air quality, mold control, thermal comfort, and sound attenuation.
- Fox Blocks ICF walls keep inside air at a consistent desired temperature and provide a quiet, distraction free interior environment.